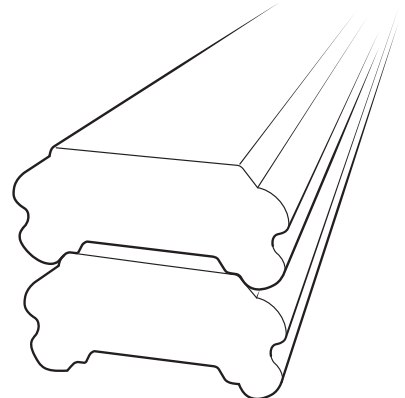
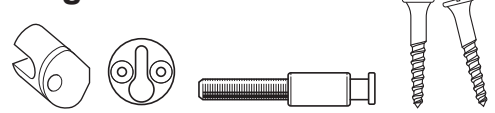


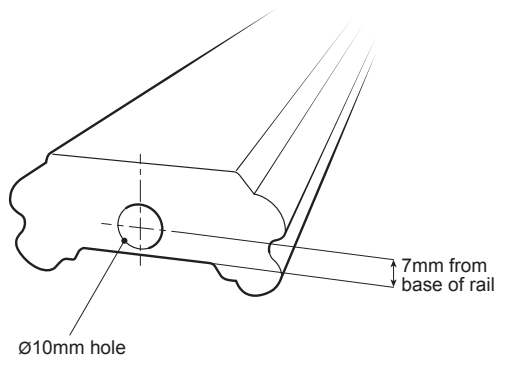
# Universal Decking Fixing Kit Fitting Instructions for DHNEW1.8 & 2.4



## Fixing Kit includes

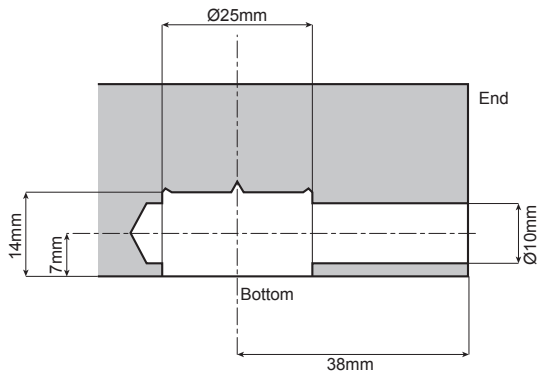


**1** Find the centre width of the handrail and mark, on this line find 7mm from the bottom edge of the rail this is your centre point.



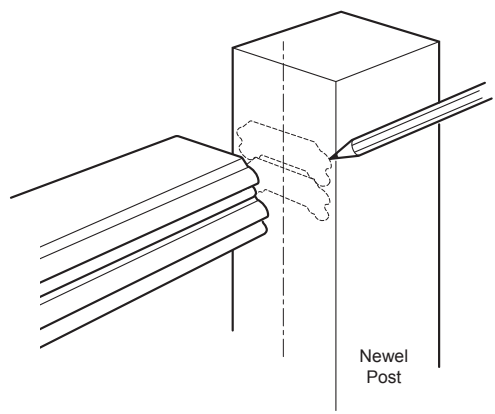
(the illustration above is one of two handrails used for our double stacked handrail but this process is to be used on all handrails and baserails)

**2** Mark and bore a Ø25mm hole and a Ø10mm hole as indicated in to the end and underside of the handrail.



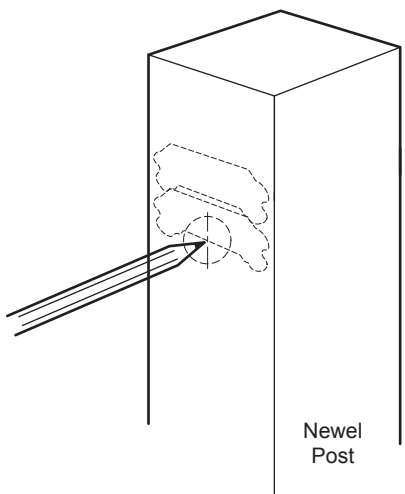
(note that it is the bottom rail on our double stacked handrail that will house the fixing kit)

**3** Mark fully the top and bottom of the rails final position (at the required height) onto the post observing the centre line.

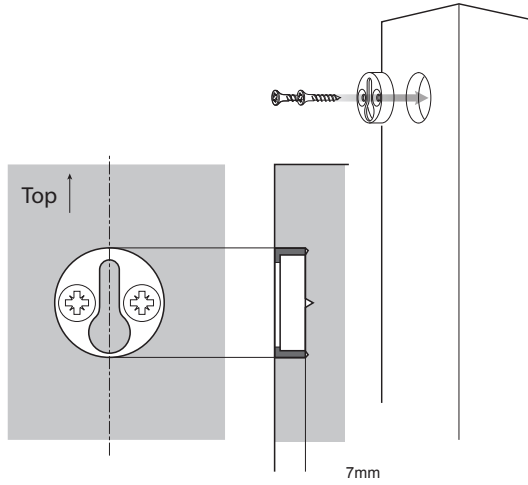


(note that it is the bottom rail on our double stacked handrail that will house the fixing kit).

**4** Locate the intersection of the centre line of the newel post and the bottom of the rail this is the centre point for your Ø25mm hole to house the keyhole disc.

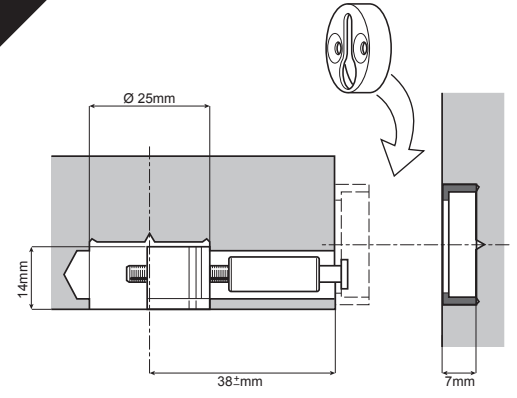


**5** Using a Ø25mm forster bit, drill a hole into the post 7mm deep so the keyhole disc is flush or slightly under. Secure disc with screws. (Make sure the disc is always facing the same way)

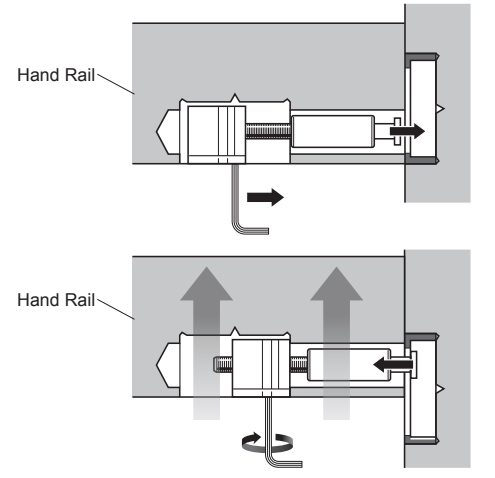


**6** Repeat the same sequence to fix the base rail before attaching the rails to the newel posts.

**7** Assemble the shaft and gear housing into the rail.

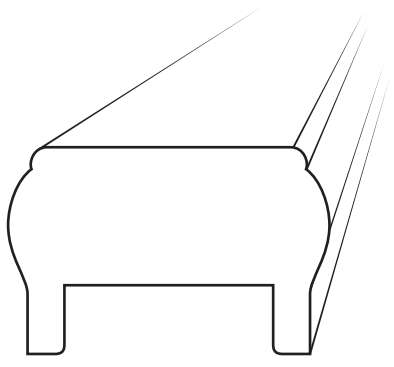


**8** The shaft should be flush or under the surface of the rail end using a 4mm hex-bit or an allen key fitted into the gear housing the shaft can then be moved to engage into the disc keyhole, then push the rail upwards and tighten.

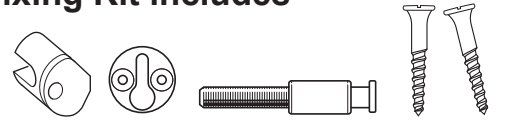


**9** Under each baserail place 3 supports one in the centre and one at each end next to the newel post at a maximum of 99mm tall from the deckboard to the underside of the baserail this will give added support for the structure.

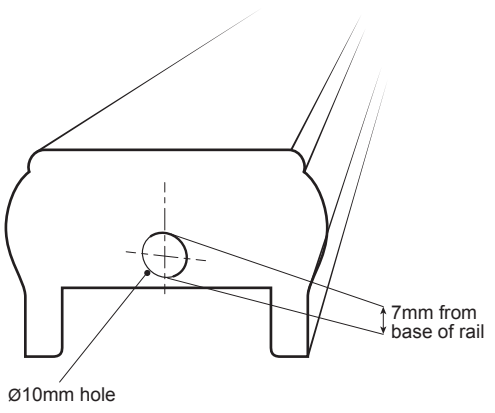
# Universal Decking Fixing Kit Fitting Instructions for DHU18 & DHU24



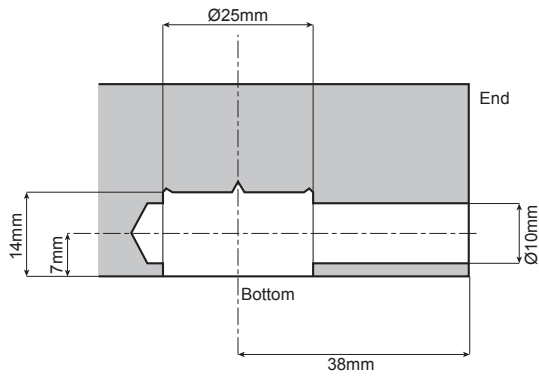
## Fixing Kit includes



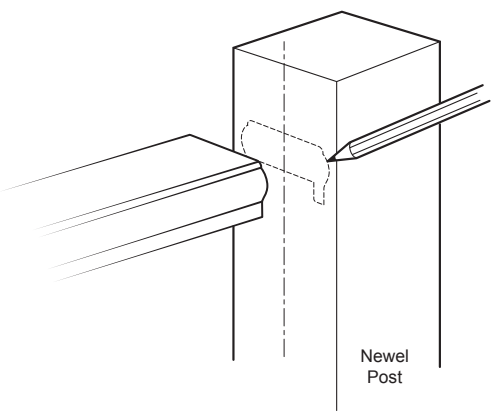
**1** Find the centre width of the handrail and mark, on this line find 7mm from the bottom edge of the rail this is your centre point.



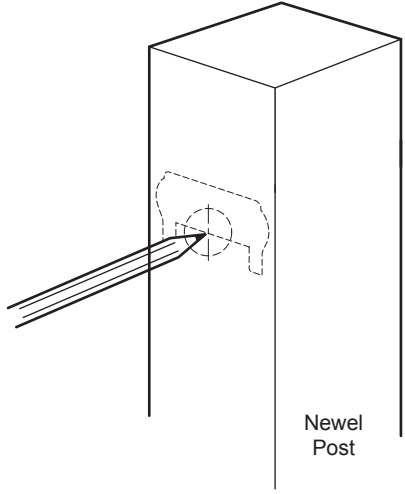
**2** Mark and bore a Ø25mm hole and a Ø10mm hole as indicated in to the end and underside of the handrail.



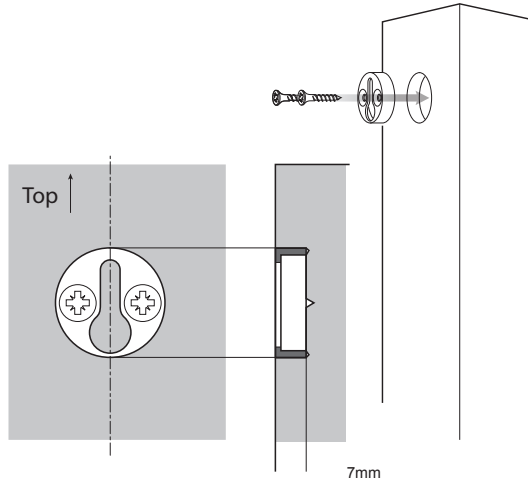
**3** Mark fully the top and bottom of the rails final position (at the required height) onto the post observing the centre line.



**4** Locate the intersection of the centre line of the newel post and the bottom of the rail this is the centre point for your Ø25mm hole to house the keyhole disc.

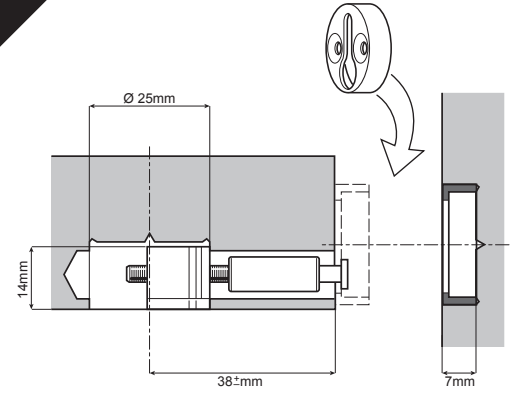


**5** Using a Ø25mm forster bit, drill a hole into the post 7mm deep so the keyhole disc is flush or slightly under. Secure disc with screws. (Make sure the disc is always facing the same way)

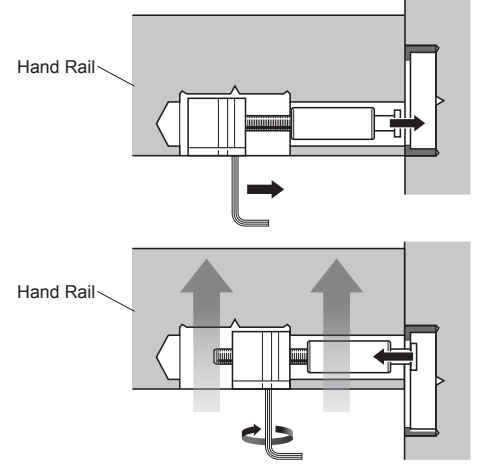


**6** Repeat the same sequence to fix the base rail before attaching the rails to the newel posts.

**7** Assemble the shaft and gear housing into the rail.



**8** The shaft should be flush or under the surface of the rail end using a 4mm hex-bit or an allen key fitted into the gear housing the shaft can then be moved to engage into the disc keyhole, then push the rail upwards and tighten.



**9** Under each baserail place 3 supports one in the centre and one at each end next to the newel post at a maximum of 99mm tall from the deckboard to the underside of the baserail this will give added support for the structure.