

PLEASE NOTE: Always start with the bottom joint first

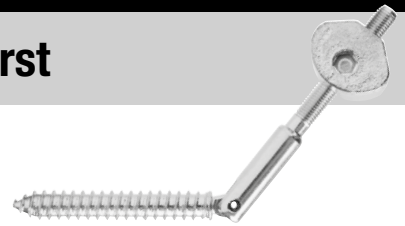
BOTTOM JOINT: (QT11.550)



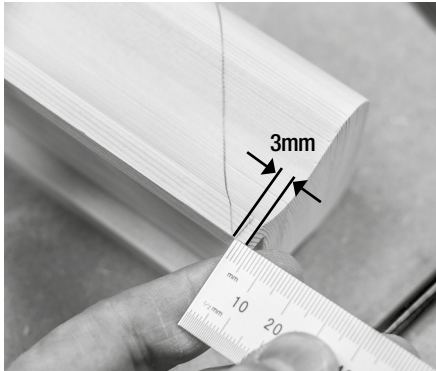
BEST PRACTICE
To tighten gear by hand
or with a drill on a low
torque setting



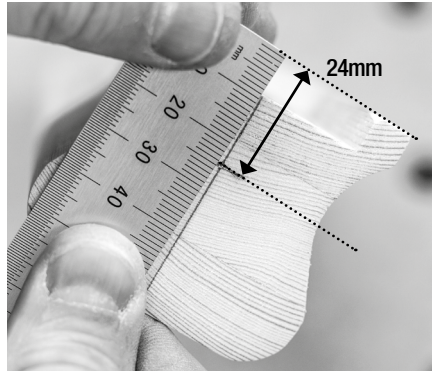
AVOID
Using an impact
driver to tighten
gear



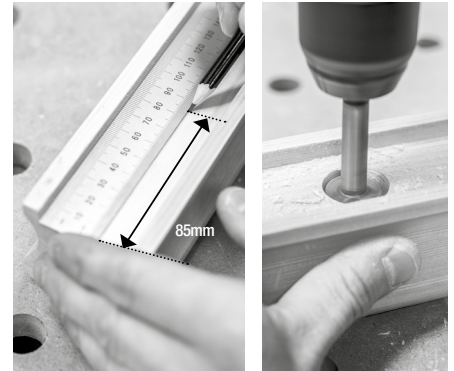
STEP 1 Cut the handrail square then mark the first angle 3mm in from the square cut. This allows for saw kerf.



STEP 2 Mark the centreline of the handrail 24mm up from the base. (Including the infill strip).



STEP 3 On the underside of the handrail, make a mark 85mm from the square end. Drill a 25mm hole 35mm deep (Inc the infill strip)



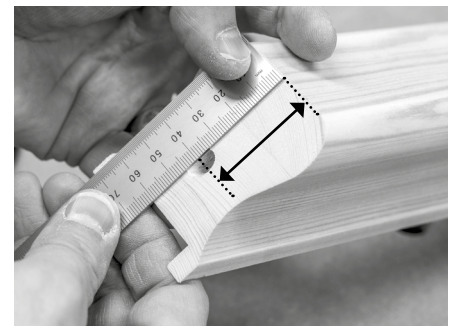
STEP 4 Drill a 8.5mm hole in the end of the handrail to a depth of 90mm. NOTE: Drill this before cutting the angle.



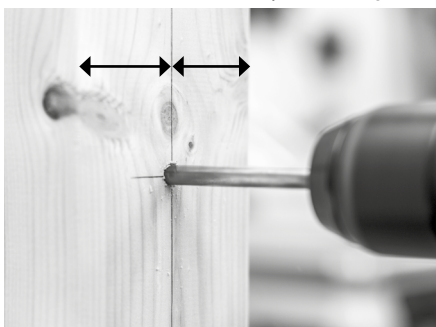
STEP 5 Cut the handrail to the correct angle & length. We recommend leaving a little extra length to allow for angle adjustment later on if necessary.



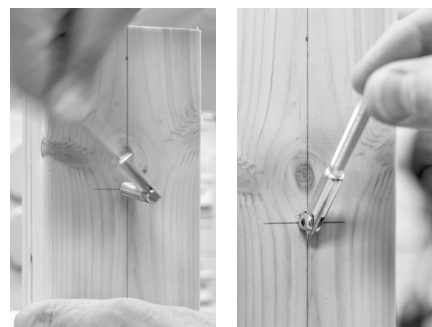
STEP 6 Measure the distance between the top of the handrail and the centre of the 8.5mm hole. This will vary from hand rail to hand rail. This will allow you to measure the correct fixing position on the newel post.



STEP 7 Mark the centre line of the newel post. Mark the position of the top of the handrail. Add on the measurement in Step 6 and drill hole (6.5mm Softwood or 7mm for hardwood) 65mm deep.



STEP 8 Wind the screw end into the pilot hole on the newel post until the beginning of the knuckle. Ensure the bolt ends in the vertical position.



STEP 9 Do not glue & tension the joint at this stage. Fit the Angle Slipfix (QT13.900) to the top newel post first. This is a good time to 'dry fit' the joint. Slide the handrail over the thread. The drive housing can be inserted.



Ensure the housing is slotted over and not through rear of the gear housing



PLEASE NOTE: Always start with the bottom joint first

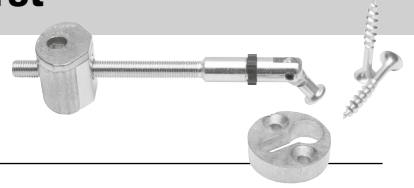
TOP JOINT: (QT13.900)



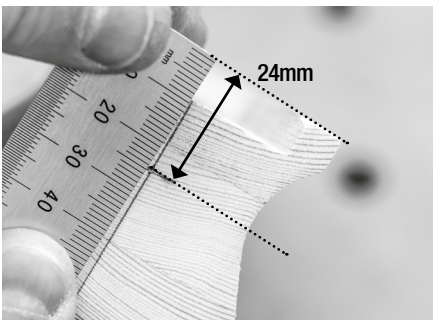
BEST PRACTICE
To tighten gear by hand or with a drill on a low torque setting



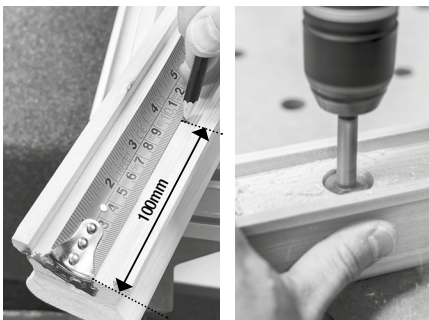
AVOID
Using an impact driver to tighten gear



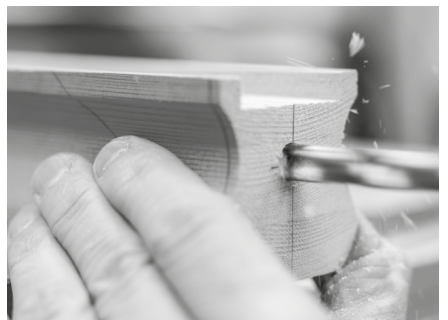
STEP 1 Mark the centreline of the handrail 24mm up from the base. (Including the infill strip).



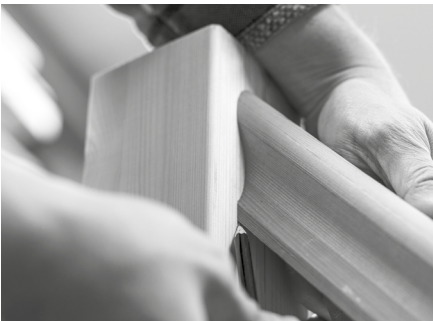
STEP 2 On the underside of the handrail, make a mark 100mm from the square end. Drill a 25mm hole 35mm deep (Inc the infill strip)



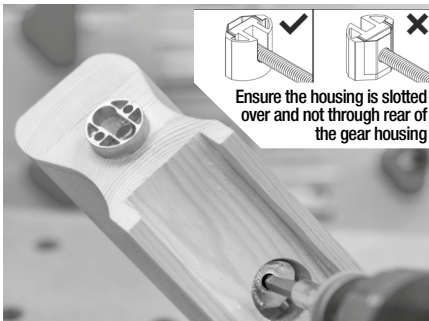
STEP 3 Drill a 10mm hole in the end of the handrail to a depth of 100mm. **NOTE:** Drill this before cutting the angle.



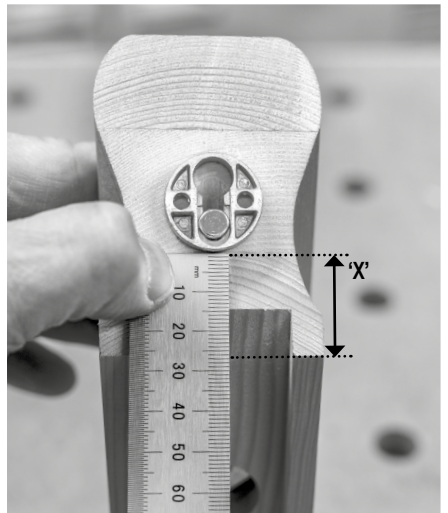
STEP 4 Cut the handrail to the correct angle & length. Position against newel post and mark the height on the newel (from the underside of the handrail).



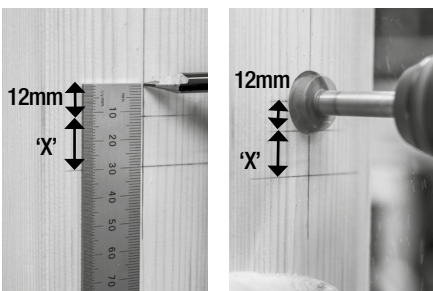
STEP 5 Insert the shaft of the Slipfix down the 10mm hole and attach the gear housing. Clip the keyhole plate onto the end and lightly tension to hold plate in place securely.



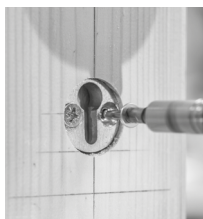
STEP 6 Measure the distance between the bottom of the keyhole plate and the base of the handrail. **Be sure to include the filler strip in your measurement.**



STEP 7 Transfer the measurement to the newel post above the mark made in Step 4. Add 12mm to this measurement. This will give the position for the hole in the Newel Post to ensure the handrail is at the correct height. Mark and drill out with a 25mm bit to a depth of 10mm.



STEP 8 Screw the keyhole plate into the 25mm hole. It should sit a few mm below the surface of the newel post. Simply attach the Slipfix into the slot and tension to complete the joint securely.



INSTRUCTION GUIDE
Angled Slipfix Handrail Joining System