

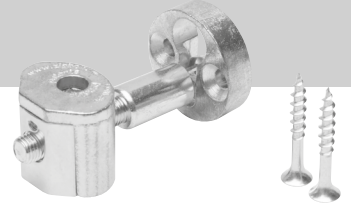
Straight Joint: (QT13.800)



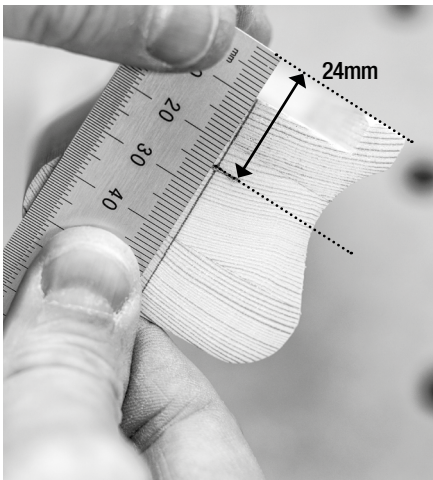
BEST PRACTICE
To tighten gear by hand
or with a drill on a low
torque setting



AVOID
Using an impact
driver to tighten
gear



STEP 1a Cut handrail squarely and mark position of 9.5mm (3/8") hole on the end of the rail. This should be central and 24mm up from the underside of the handrail (including the infill strip).



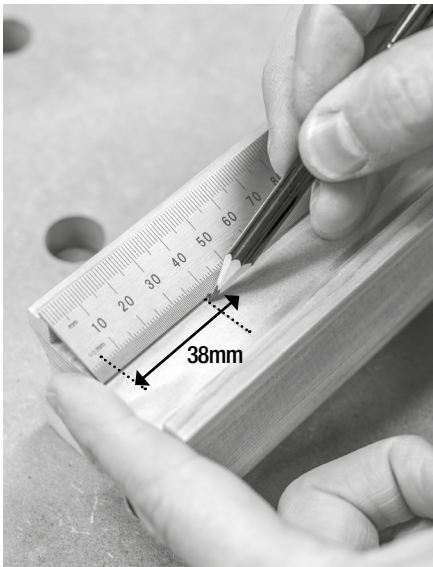
STEP 1b If using the optional Railbolt Jig, you can simply position the jig over the end of the handrail and drill out the hole using the 9.5mm guide.



STEP 2 Drill out the 9.5mm (3/8") hole to a depth of around 40mm.



STEP 3a Measure a distance of 38mm from the end of the handrail. Make a mark on the underside.



STEP 3b If using the Railbolt Jig, you can use the pre-designated hole as an accurate guide.



STEP 4 Drill out the underside of the handrail on the 38mm mark. Use a 25mm drill and drill to a depth of 35mm (including the infill strip).



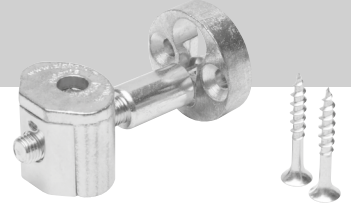
Straight Joint: (QT13.800)



BEST PRACTICE
To tighten gear by hand
or with a drill on a low
torque setting

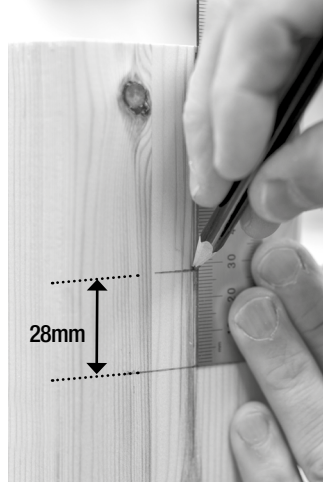


AVOID
Using an impact
driver to tighten
gear



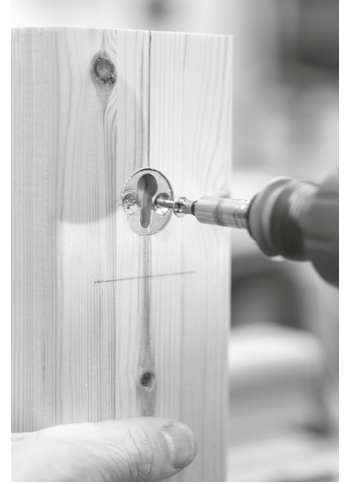
STEP 5

Mark the centre line of the newel post. Mark the position of the bottom of the handrail. Make a second mark 28mm above the line. This will give you the centre point of keyhole plate.



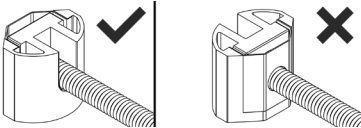
STEP 6

Drill out the newel post with a 25mm drill to a depth of 7mm. The keyhole plate will then sit slightly under the surface. Screw the plate in place.



STEP 7

Simply thread the shaft of the Straight slipfix through the end of the handrail. You can slide the gear housing onto this shaft and begin to tighten.

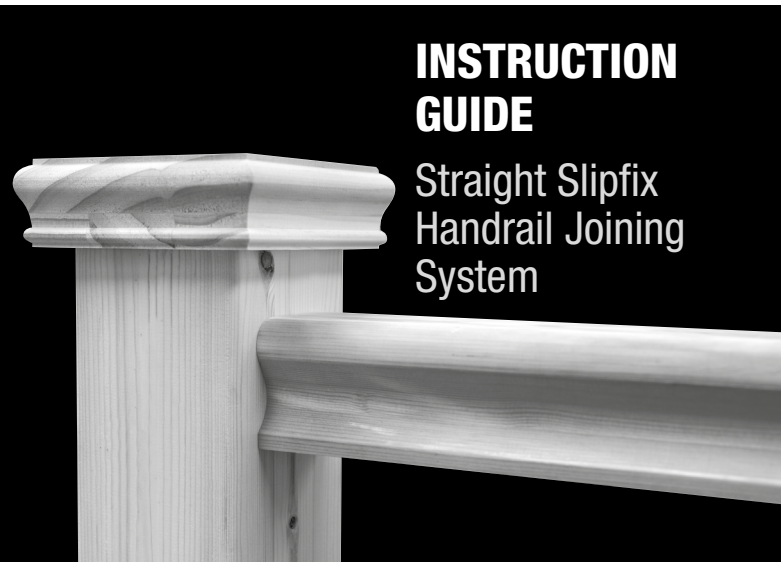
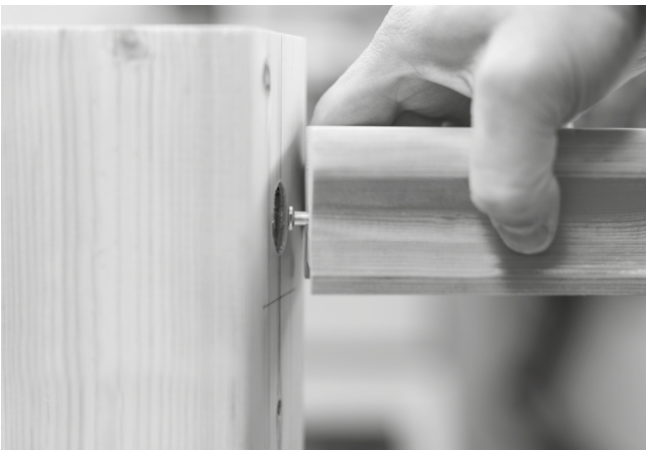


Ensure the housing is slotted over and not through rear of the gear housing



STEP 8

Slot the end into the keyhole slot and tighten fully.



INSTRUCTION GUIDE

Straight Slipfix
Handrail Joining
System